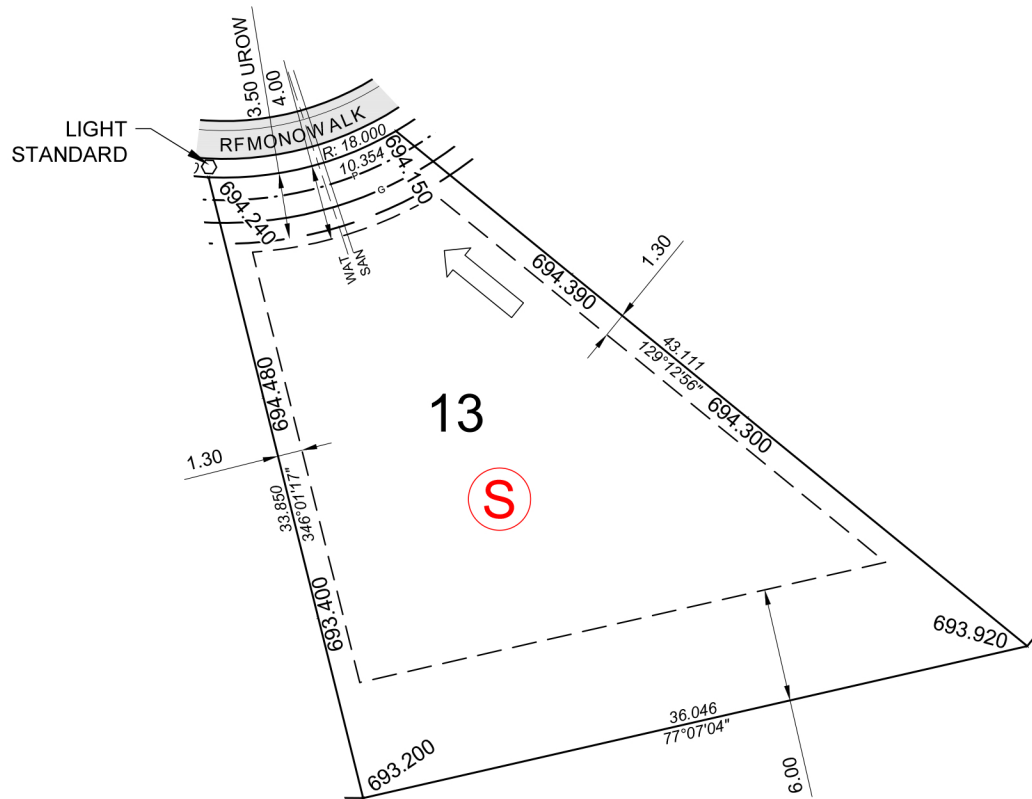




HERON COURT



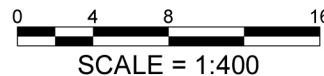
13

S

Lot 13	
LTF = 691.90	LOWEST TOP OF FOOTING ELEVATION (TYP 0.70m ABOVE SAN @ P/L)
SAN = 688.51	SANITARY SEWER INVERT ELEVATION AT PROPERTY LINE
TF-BC = 692.16	TOP OF FOOTING ELEVATION ABOVE WHICH A BEARING CERTIFICATE IS REQUIRED
TF-DF = N/A	TOP OF FOOTING ELEVATION ABOVE WHICH A DEEP FILL FOUNDATION IS REQUIRED
MBOE = 694.35	MINIMUM BUILDING OPENING ELEVATION (0.30m ABOVE HIGH WATER LEVEL)

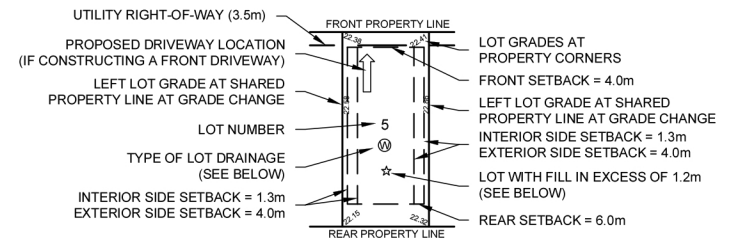
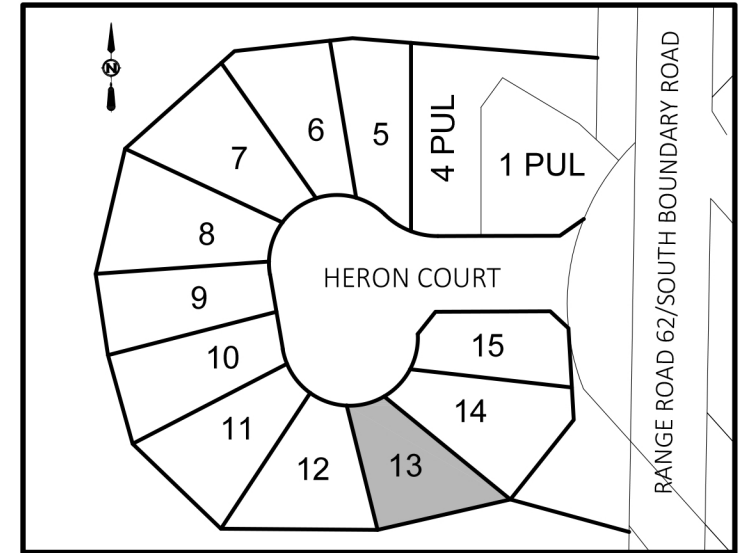
NOTES:

- CURB STOP LOCATION IS APPROX. 0.30m FROM FRONT OF PROPERTY LINE INTO THE ROAD ROW
- PIGTAIL LOCATION FOR LOT SERVICES ARE APPROX. 5.0m FROM CURB STOP INTO THE LOT
- ELECTRIC SERVICE IS LOCATED 1.2m INTO PROPERTY FROM FRONT PROPERTY LINE.
- GAS SERVICE IS LOCATED 2.4m INTO PROPERTY FROM PROPERTY LINE
- ALL FOUNDATION CONCRETE IS TO BE TYPE 50 (SULPHATE RESISTANT) CEMENT WITH A 56-DAY COMPRESSIVE STRENGTH OF 32 MPa AND WITH A MINIMUM WATER TO CEMENTING MATERIAL RATIO OF 0.45. THE ADDITION OF +5% AIR ENTRAINMENT IS ALSO RECOMMENDED FOR CONCRETE EXPOSED TO FREEZE-THAW CONDITIONS.
- REFER TO REGISTERED LEGAL PLAN FOR LEGAL DIMENSIONS, BEARINGS AND PIN LOCATIONS
- INFORMATION BASED ON SUBDIVISION DESIGN PROVIDED BY SCHEFFER ANDREW LTD.



LANDMARK PROPERTIES

HERON CROSSING - PHASE 1
BLK 1, LOT 13



- (A) LOT GRADING TYPE A
BACK TO FRONT DRAINAGE 2-3% OVERALL SLOPE
- (B) LOT GRADING TYPE B
BACK TO FRONT DRAINAGE 3-6% OVERALL SLOPE
- (D) LOT GRADING TYPE D
STANDARD SPLIT DRAINAGE
- (S) LOT GRADING TYPE S
SPLIT DRAINAGE, POSSIBLE WALKOUT BASEMENT
(CAREFUL GRADING REQUIRED)
- (W) LOT GRADING TYPE W
SPLIT DRAINAGE, POSSIBLE WALKOUT BASEMENT
(CAREFUL GRADING REQUIRED)

* LOTS WITH FILL IN EXCESS OF 1.2m: ANY LOT THAT HAS ANY PART OR PORTION OF ITS FOUNDATION ON FILL WILL REQUIRE A BEARING CERTIFICATE

---P--- POWER UTILITY
---G--- GAS UTILITY