



HERON CROSSING

and

Point at Canyon Creek

www.heroncrossing.ca

LIMITED TIME
\$20,000
PURCHASE INCENTIVE

Build your
HOME IN A NATURAL SETTING
surrounded by Tranquility



**Lots Starting @
\$154,900+GST
Walk-outs @
\$189,900+GST**

**First 5 lots sold include a
ONE YEAR membership to
Desert Blume Golf Course.**

Landmark Properties (Med. Hat) Ltd. combined with the City of Medicine Hat \$10,000 program, is offering a \$20,000 limited time incentive to home buyers. Offer can be withdrawn at any time.



LANDMARK

PROPERTIES (MED HAT) LTD.

4 0 3 - 5 2 9 - 7 7 6 4

A tranquil new housing development nestled among the Seven Persons Creek, surrounded by nature.

Most lots are adjacent to Seven Persons Creek & are all view lots well above the flood zone.

In city limits, fully serviced with city utilities (more economical than cypress County).

Architectural controls are applicable.

Phase 1 lots are nestled in the creek bottom & protected from winds.

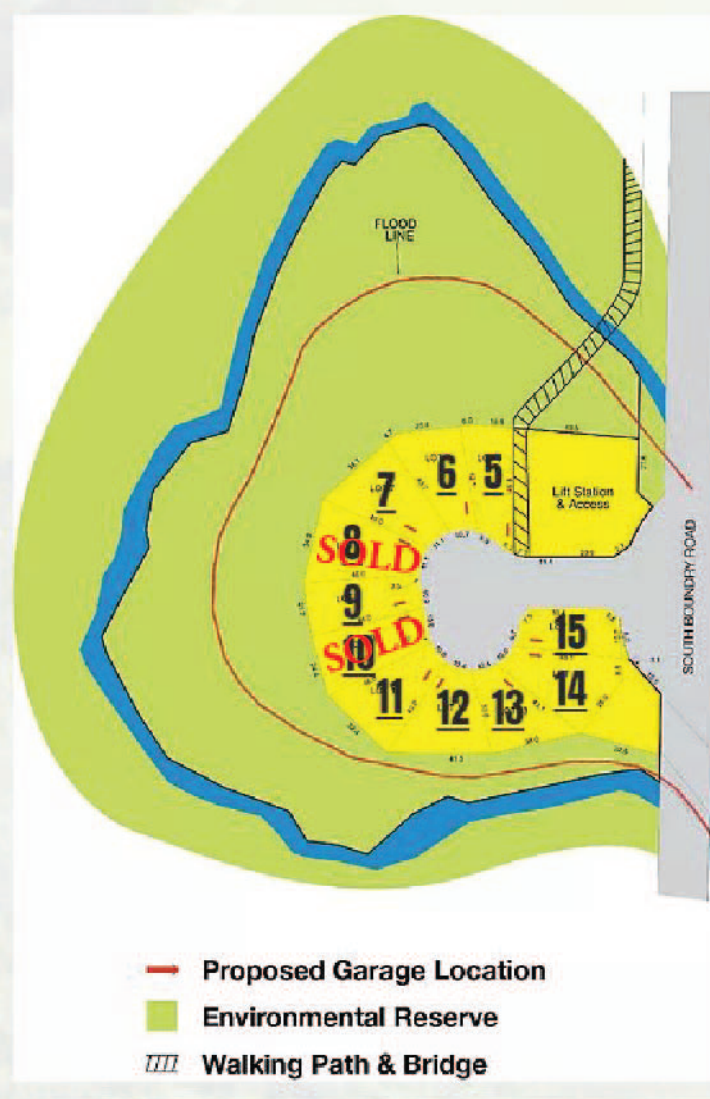
Paved walking trail and bridge connecting lots to existing Canyon Creek development.

Lots are adjacent to Desert Blume Golf Course (two have views of hole 13).

Lot Prices and Information

4	SOLD	(City of Medicine Hat for access to existing lift station.)
5	\$189,900+GST	Walk-out Basement
6	\$199,900+GST	Walk-out Basement
7	\$207,900+GST	Walk-out Basement
8	SOLD	Walk-out Basement
9	\$206,900+GST	Walk-out Basement
10	SOLD	Walk-out Basement
11	\$209,900+GST	Walk-out Basement
12	\$209,900+GST	Walk-out Basement
13	\$205,900+GST	Partial Walk-out
14	\$179,900+GST	No Walk-out
15	\$154,900+GST	No Walk-out

PHASE 1 - HERON COURT NOW SELLING!

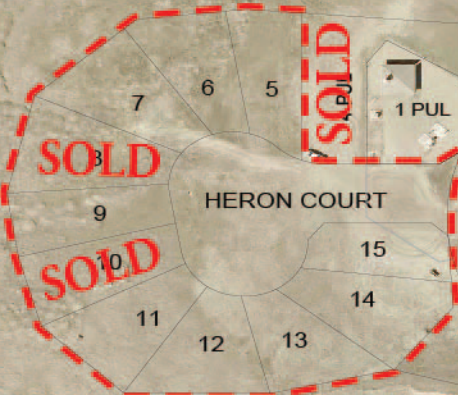


For further details on lot dimensions and architectural controls visit our website www.heroncrossing.ca



PROPOSED
HERON POINT
PHASE II

HERON CROSSING
PHASE I



AS OF DATE 2019/03/28
THIS PLAN IS THE PROPERTY OF THE ENGINEER AND IS NOT TO BE REPRODUCED OR COPIED IN ANY MANNER WITHOUT THE WRITTEN PERMISSION OF THE ENGINEER